



# *The Carnival of the Shangri La Gardens Animals*



Shangri La | Botanical Gardens<sup>®</sup>  
& Nature Center



Camille Saint-Saëns wrote *Carnival of the Animals* and gave each animal a sound with musical instruments. There are 14 animals in his carnival. Here at Shangri La Gardens we have our own “Carnival” and some different animals. As we listen to this music we will hear Saint-Saëns animals and learn about Shangri La Garden's animals as well.



# Royal March of the Lion

The pianos play the Lions Roar. As you listen, count how many roars you hear. Record your number below:

---

Shangri La Gardens does not have lions, however we do have coyotes.

They make a howl instead of a roar, and they are the king of our “jungle”.

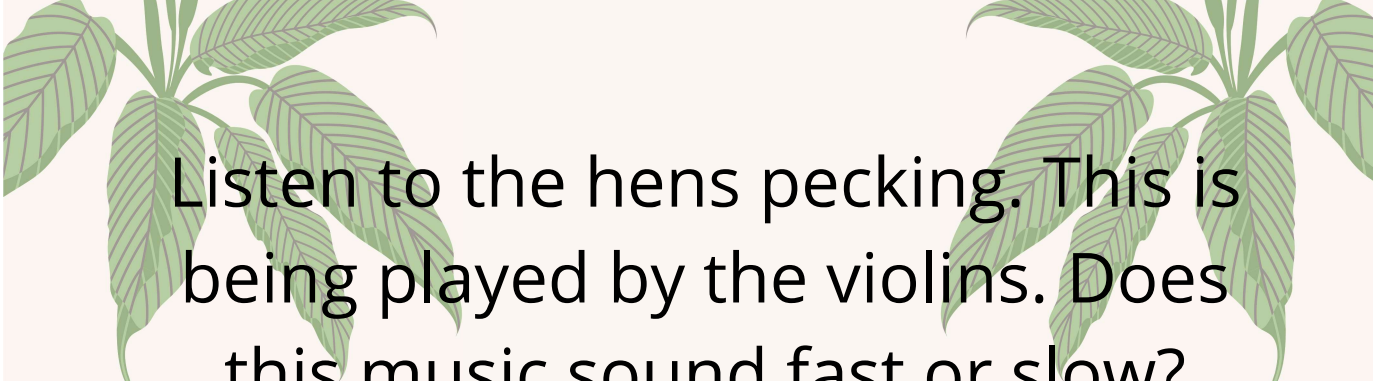


# Hens and Roosters

The hens and roosters are next in the Carnival. Throughout this movement the hens love to peck and the rooster struts around.

The birds that peck at Shangri La Gardens are woodpeckers. They love to use their beaks to peck trees in search of food.



A cluster of green leaves with detailed vein patterns is positioned at the top of the page, partially framing the text.

Listen to the hens pecking. This is being played by the violins. Does this music sound fast or slow?

---

Can you hear how the music changes when the rooster arrives?  
How does the music change?

---

A collection of orange and green leaves is located at the bottom of the page, surrounding the tree silhouette. The orange leaves are stylized with multiple lobes, while the green leaves are more elongated and have prominent veins.

Draw a woodpecker in this tree.

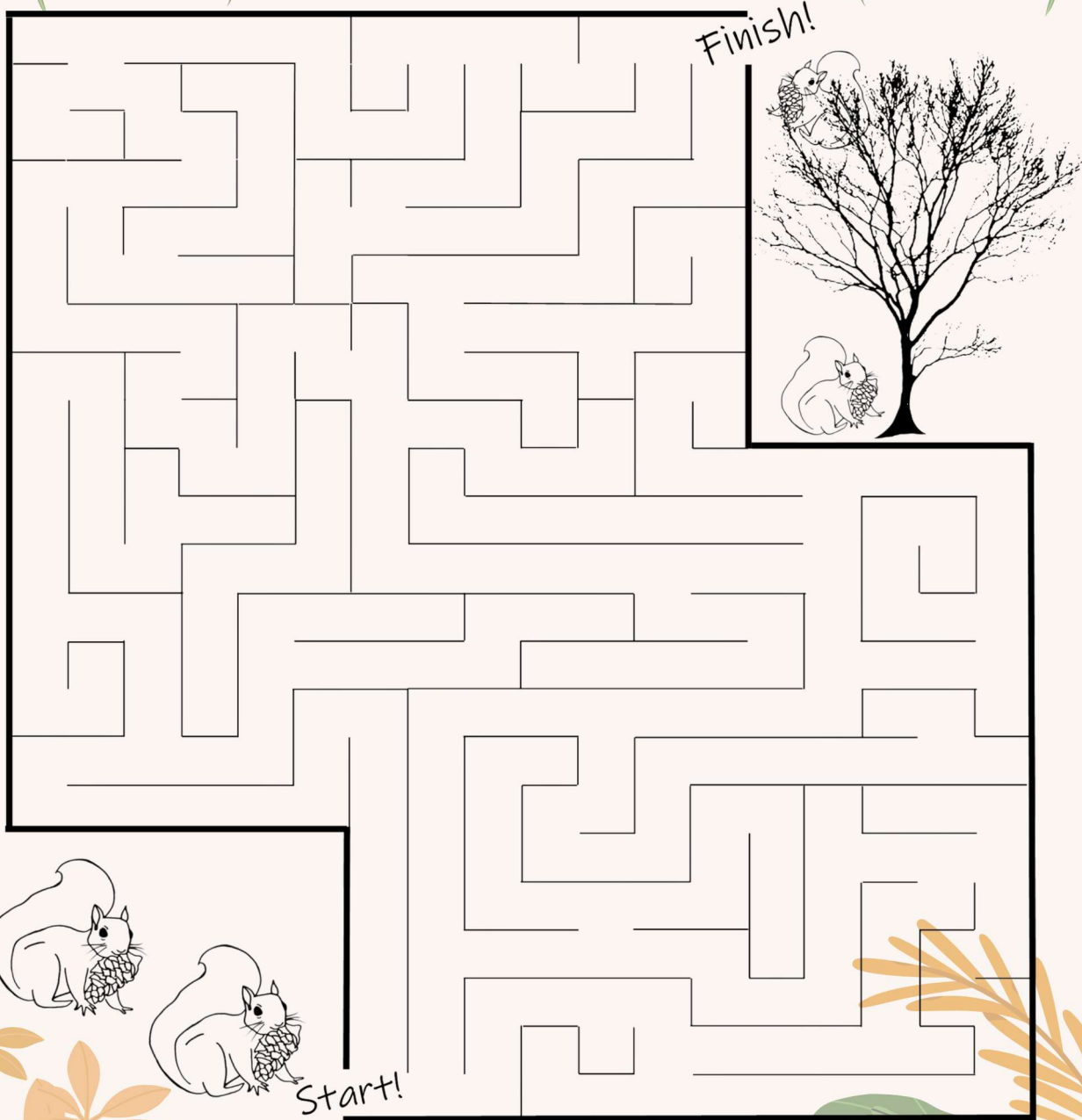
# Wild Donkeys

The donkeys in this piece are very fast animals that race up and down the piano keyboard in Saint-Saëns Carnival. Donkeys love to play chase all day!

Squirrels love to play chase at Shangri La Gardens. These rodent mammals move so fast and quick!



# Help the squirrel climb up the tree!



Does this music make you want to move fast?

# Tortoises

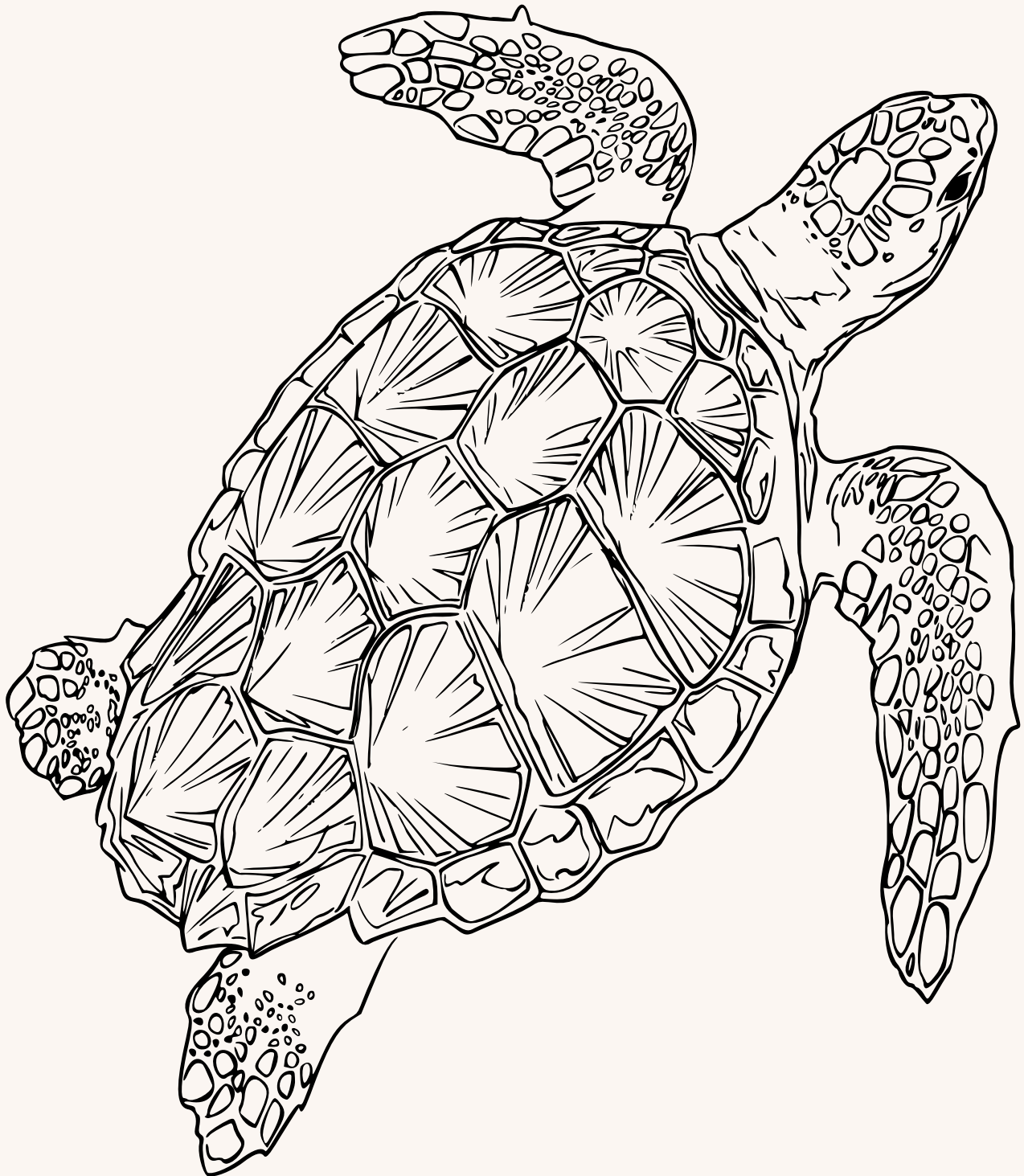
The tortoise is a very slow moving cold-blooded reptile. The tortoise is related to the turtle, however the tortoise spends most of its time on land, while the turtle is adapted to live in the water. Shangri La Gardens has many species of turtles.





How does this music make you feel?

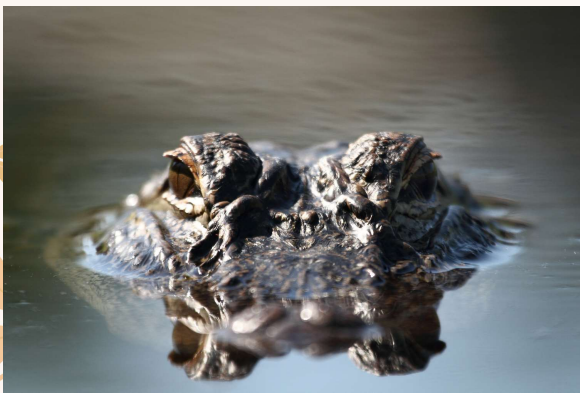
Color the turtle below using the music  
as an inspiration!



# The Elephant

The Elephant is so big! Can you imagine what they would look like if they did a dance? They probably wouldn't be very graceful.

Shangri La Gardens may not have elephants, but they do have alligators. These cold blooded reptiles are big and would have a difficult time dancing a waltz.

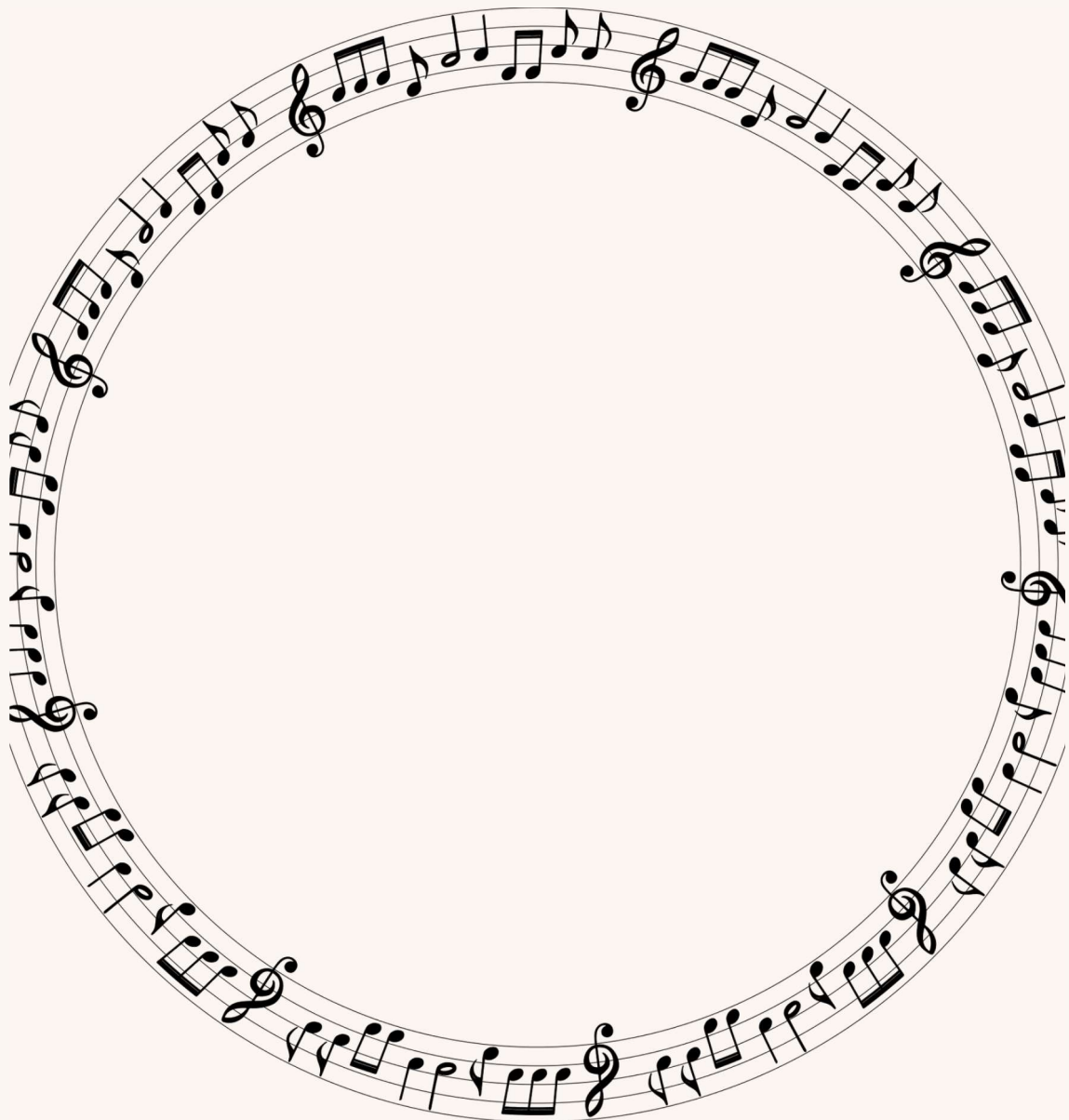


# **Draw an alligator dancing a waltz.**

Is the music loud or soft, or both?

How are the sounds making the  
sound of this animal dancing?

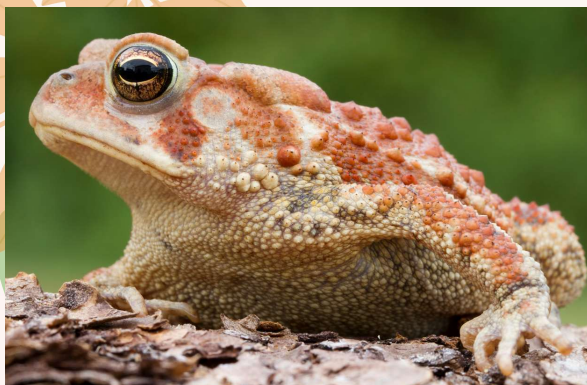
Would it be difficult for an alligator to  
dance? Does the music sound  
graceful?



# Kangaroos

Kangaroos live in Australia and hop instead of walk. They are marsupials and have a pouch on the front of their body where they carry their babies.

Here in Shangri La Gardens we may not have kangaroos, but we do have frogs and toads. These cold-blooded amphibians hop around the gardens.

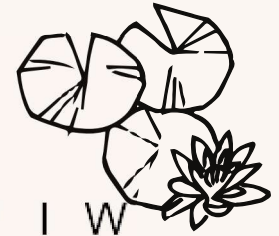


Are the frogs in the music  
hopping fast or slow?

Solve the word search below.



### Frog Life Cycle



Y W V L H I N Q H H L L R Q P I W  
S M G W U O J N P S P J C J K N T  
J O P A E L I B D O N J V L D A M  
R Q I M S A B D A A T X Z R D B F  
G W M W H V E Z K G P W Q P O D N  
P K I J S Y F M L G J Y O X T W N  
N J V F G W G Z M G N L L I Q V I  
V U Q W X G I A H L E B I I Z Z J  
C X O A Y X P T W S F K B B L C F  
Y Z P C J F R A P E M V Z I T M N  
G A T P R J T L J A R U B P D S G  
O U D G M E F T R S R B S A E B  
G O R F R C S L X B B F B O V N J  
G T M A S O U B J J G W N U L T F  
V F T T M Q E E S L I F X M O Y L  
P U K L E D T T N Z X Z U A U B I  
D B C E R J Z N D C K Y Y M J T O

leap

lily pad

water

tadpoles

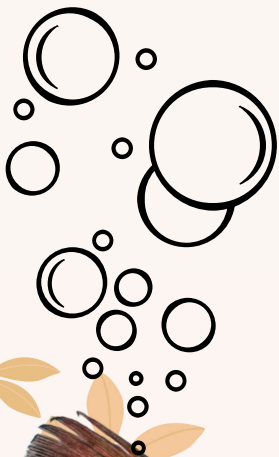
frog



# Aquarium

Have you ever seen an aquarium?  
An aquarium can be home to fresh  
water fish, saltwater fish, or a mix  
of fresh and salt water, called  
brackish water fish.

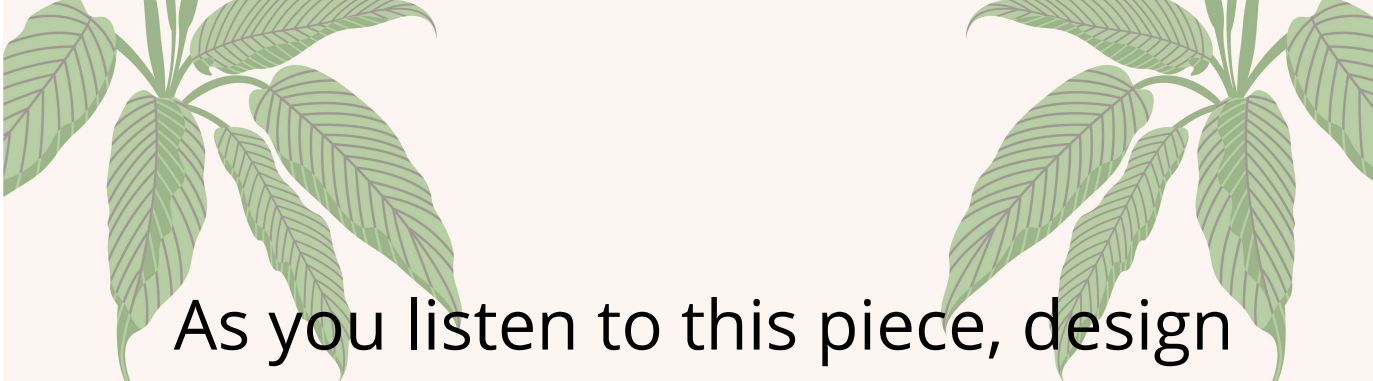
Good water quality is very  
important to fish. What do you  
think happens if there isn't enough  
oxygen in the water?



---

---



A cluster of green leaves with detailed vein patterns is positioned at the top of the page, framing the text.

As you listen to this piece, design  
and draw what would live in your  
aquarium.

Are the organisms you chose  
native to Texas or non-native to  
Texas?



# Mules

We think of donkeys being the only animal that makes the “hee-haw” sound, however the mule can make this sound too!

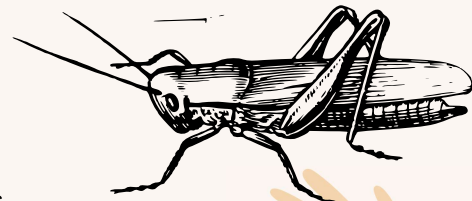
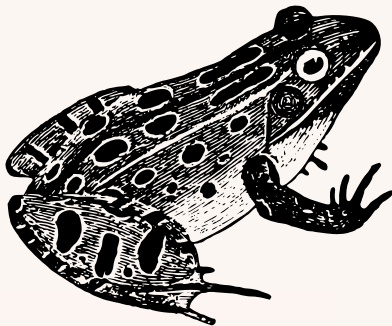
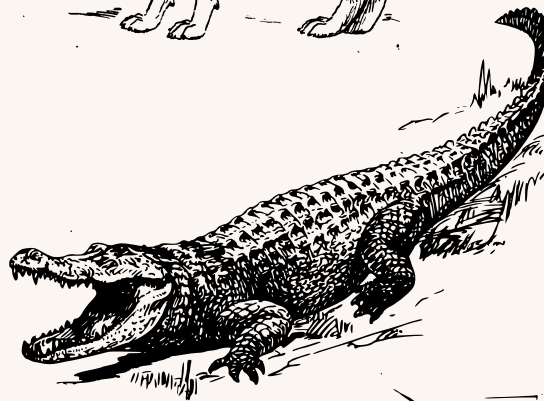
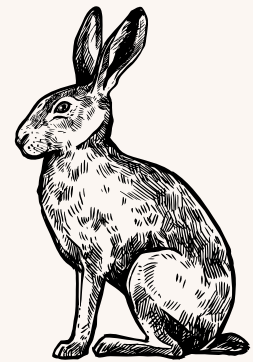
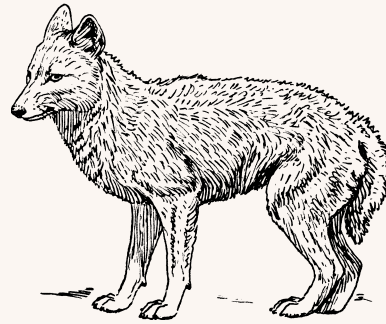
The hee-haw is unique with its high and low pitch (not to be confused with loud and soft). Nature is full of high and low sounds. We think of tiny animals making high pitch sounds, while big animals make low pitch sounds.





Count how many "hee-haws" you hear.

---



Label each animal high or low, based on which pitch of sound you think they make.

# Cuckoo

The Cuckoo bird makes a unique sound too. Its "cuckoo sound" is a high-low pitch combination, but not as brash as the mule.

In the music, the clarinet is the cuckoo and the pianos are supposed to be footsteps in the woods.

Did you know we have a Yellow-billed Cuckoo in Southeast Texas?



As you listen to the music of the Cuckoo, count the number of times you hear the clarinet play the cuckoo sound.

\_\_\_\_\_

Is the music loud or soft?

\_\_\_\_\_

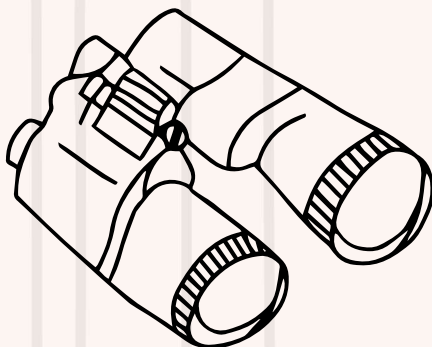


Is the music slow or fast?

\_\_\_\_\_

Who do you think is walking around the forest looking for a cuckoo bird?

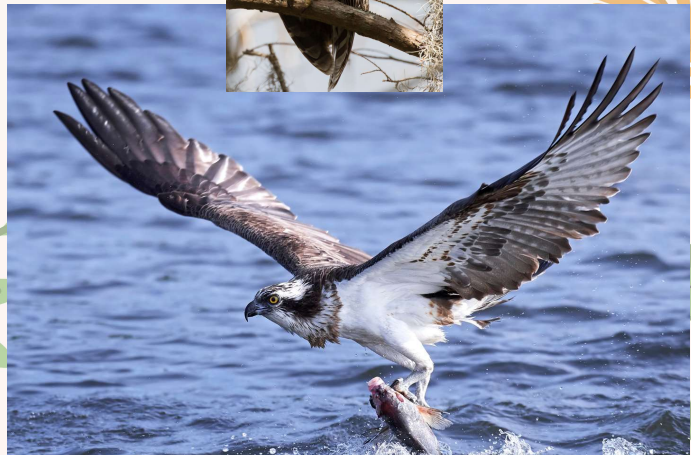
\_\_\_\_\_

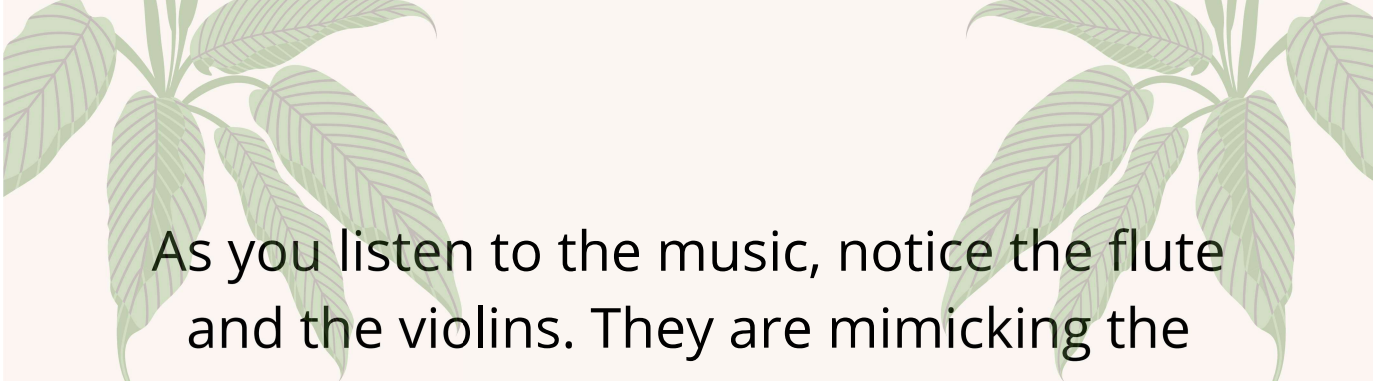


# Aviary

An aviary is a large cage, building, or enclosure for keeping birds in. Aviaries are designed to look like a bird's preferred habitat, so the bird feels like they are in their natural environment.

Shangri La Gardens is home to many species of birds. The birds that live here are native to Southeast Texas, and are not kept in a cage. Shangri La Gardens provides ideal habitat and is a great source of food, water, and shelter.





As you listen to the music, notice the flute and the violins. They are mimicking the sounds of a bird flying.

Does the music sound like a bird to you?  
If so, how?

---

Describe what the birds are doing based on the sounds you hear.

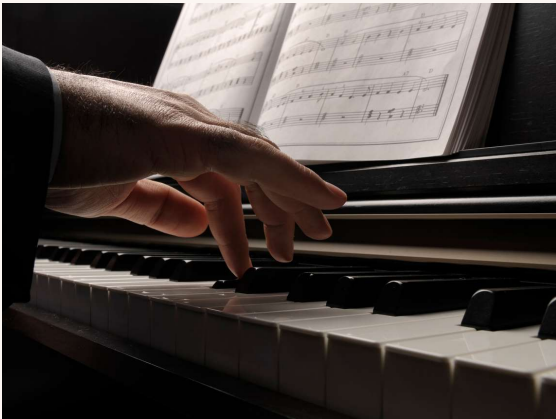
---



Draw a picture of your favorite bird in its natural habitat. Does it live in Southeast Texas or somewhere else?

# Pianists

Pianists are animals too! Humans are part of nature. When a person plays the piano, they are doing their job for the orchestra. Likewise, every person has to do their part for the environment. We are each responsible for the natural world in which we live.





Can you name some ways you are responsible for keeping your environment clean?

---

What would happen if we let litter and pollution take over?

---

Name three things you can do to make nature healthier and more beautiful.

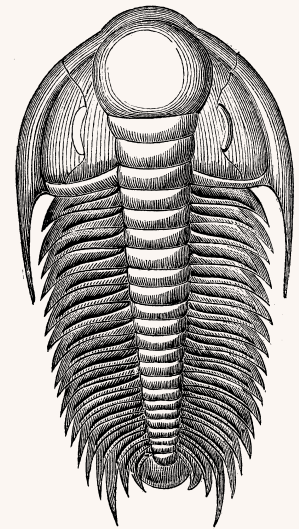
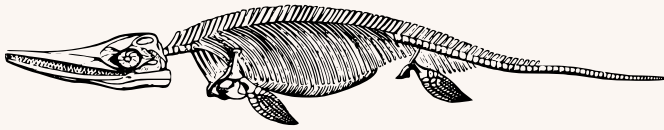
1. \_\_\_\_\_
2. \_\_\_\_\_
3. \_\_\_\_\_



# Fossils

The Fossils in this Carnival is the xylophone playing, and it sounds like bones clanking together.

Fossils are evidence of animals that lived a long time ago. Can you imagine what they looked like?





As you listen, can you imagine what kinds of animals the fossils came from? \_\_\_\_\_

Can you hear a familiar tune during this piece? \_\_\_\_\_

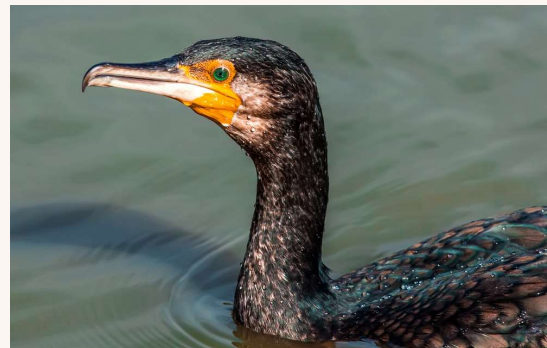
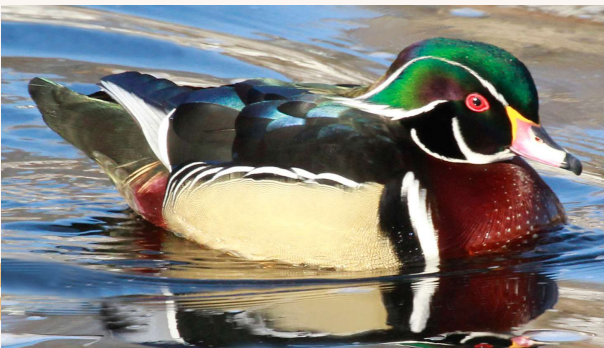


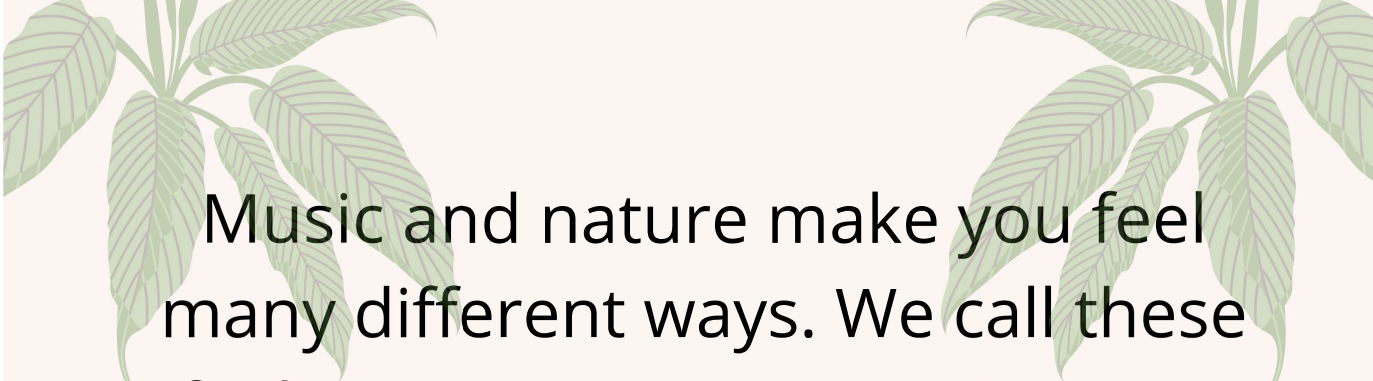
Draw an image of your fossil moving and clanking around

# The Swan

The Swan is a beautiful bird that moves very gracefully. Often times, they are found gliding on a pond or lake. Trumpeter swans are the largest native waterfowl and the heaviest flying birds in North America.


While we have never seen a swan at Shangri La Gardens, we do have many species of birds that glide along the surface of water too.





Music and nature make you feel many different ways. We call these feelings emotions. Sometimes we feel happy, sad, calm, joyful, angry, or one of the many other emotions we have.

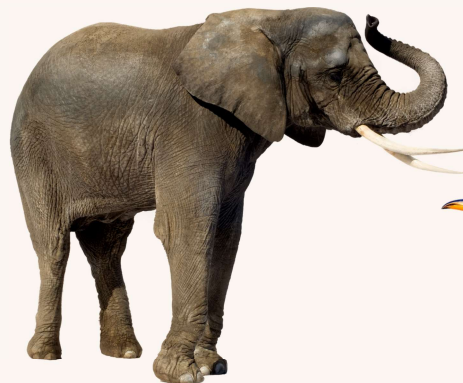
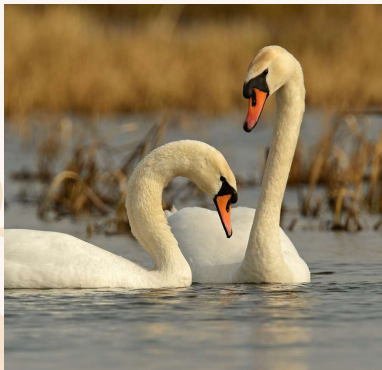
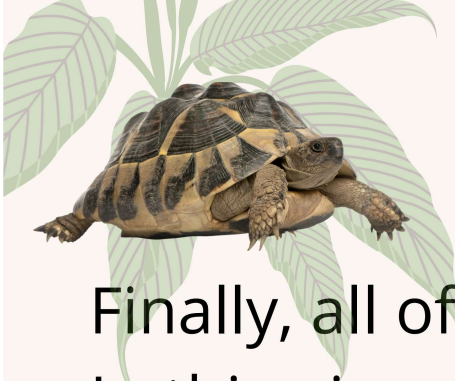
As you listen to “the swan”, write or doodle the emotions you feel during the music.  
Describe why you feel this way.

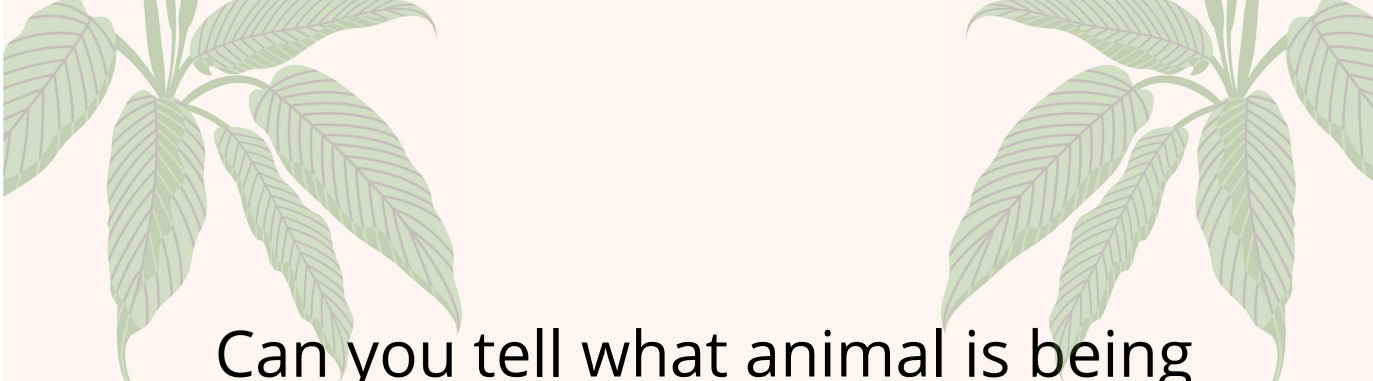


# Finale

Finally, all of the animals come together. In this piece we hear all of the sounds of the animals and instruments in our carnival.

Listen to this final movement and see if you can identify all of the animals. Place a check mark by the animals you hear.



A cluster of green, serrated leaves with prominent veins, positioned at the top left and top right of the page.

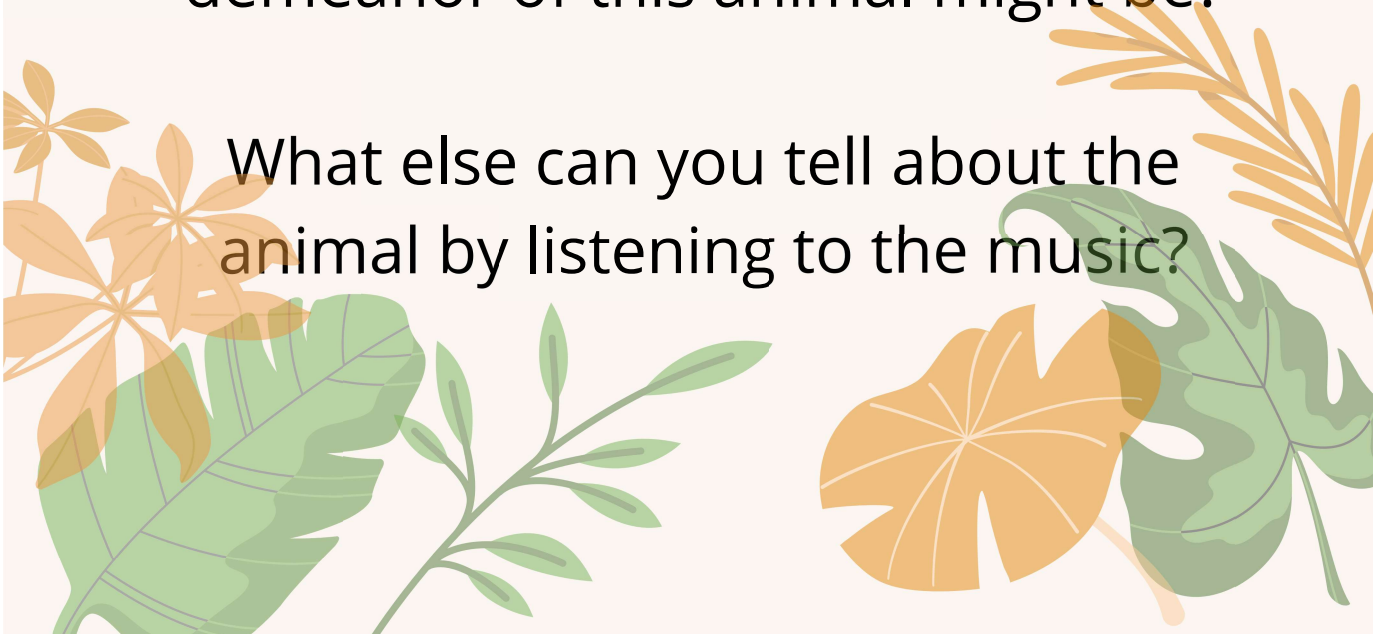
Can you tell what animal is being represented?

Can you tell what their habitat is?

Can you tell if it is big or small, or fast or slow?

Can you tell what this animal might eat, or what might eat it?

Can you tell what the personality or demeanor of this animal might be?

A collection of stylized leaves in orange and green, including a large green monstera leaf, a smaller green leaf, and several orange leaves of various shapes, positioned at the bottom of the page.

What else can you tell about the animal by listening to the music?



## **Use your listening skills!**

What can you learn from the sounds that surround you? Using just your sense of hearing, you will discover the range of activities and inhabitants that occupy the space around your school grounds.

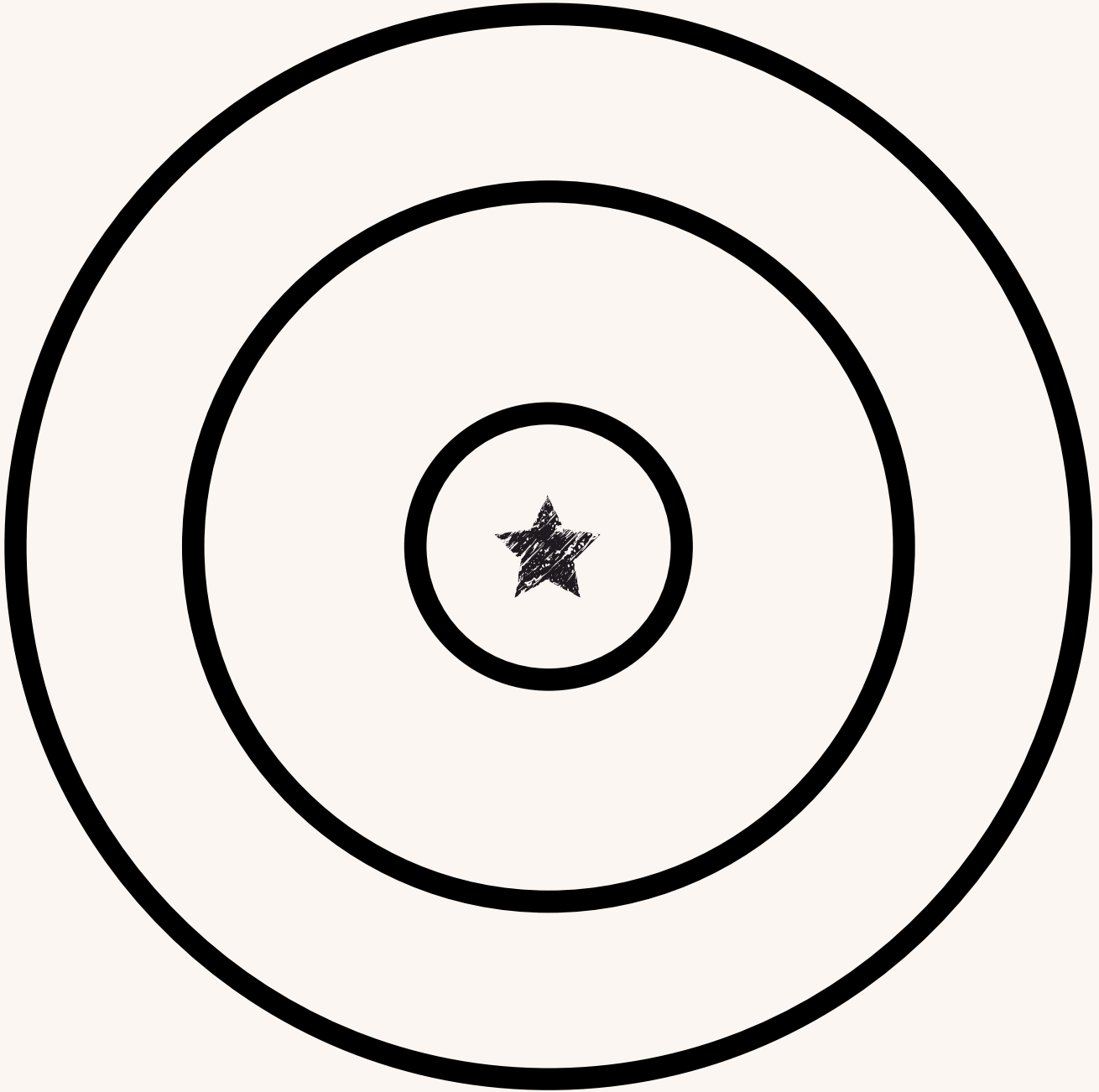
This is a sound map and the star represents where you are sitting. When you hear a sound, make a mark on the paper to represent the sound. The location of the mark should indicate the direction and distance of the sound from where you are sitting.

Try not to draw a detailed picture for each sound, but make just a simple mark or symbol. For example, a few wavy lines could represent a gust of wind, or a musical note could indicate a singing bird.

Close your eyes while listening for sounds. You can increase your hearing ability by making “fox” ears by cupping your hands behind your ears.

# Sound Mapping

**Location:**



What do you hear?

**This is a collaborative program of:**

